

CERTIFICATE OF LOCATION OF GOVERNMENT CORNER

NORTH QUARTER Corner of Section 17, Township 107, Range 42, 5TH P.M.

STATE OF MINNESOTA, County of MURRAY

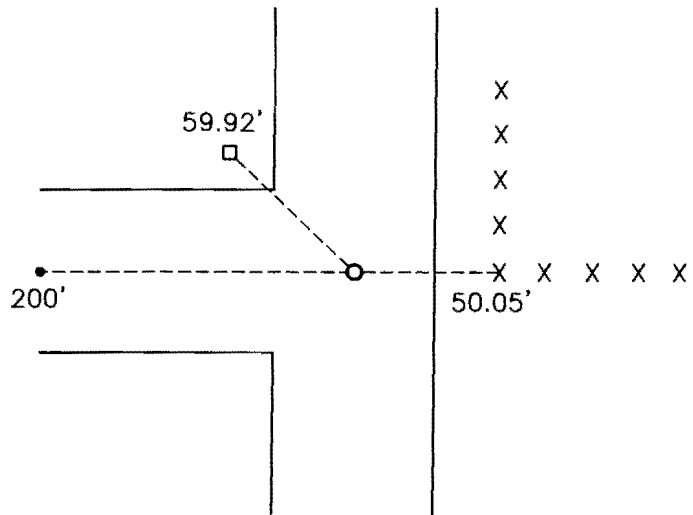
At the corner location shown on the sketch:

On 04-17-2008 found a SPIKE
DATE

left monument as found, lowered monument, removed monument (explain)

On 04-17-2008 placed a 5/8" IRON WITH SEAL #43844
DATE

SKETCH OF REFERENCE TIES



Minnesota State Plane Coordinate
System Murray County Datum
NAD83 (1996)

N: 184777.361
E: 461344.581

Nail and seal in corner fence post East 50.05'
Spike West 200'
Southeast corner of power box NW 59.92'

Statement of evidence relative to this corner location is on back of page.

I hereby certify that this document and the data contained herein was prepared by me or under my direct supervision.

James V. Johnson 10/15/08
SIGNATURE DATE

Registration No. 43844

Land Surveyor, Professional Engineer
 County Surveyor, County Engineer

OFFICE OF THE COUNTY RECORDER

County of _____

I hereby certify that this document was filed in the Co. Recorders office at _____ .M on the _____ day of _____ A.D. 20 _____

County Recorder *James V. Johnson*
By OCT 22 2008, Deputy

DOCUMENT NO. _____

Statement of Evidence

In 1861, L. G. M. Fletcher, did the original subdivision of the township.

On June 26, 1902, 2 stones were recorded at the corner.

The Murray County Highway Department set a concrete stone and tied it out.

In 1963, The Murray County Highway Department found the stone, and placed an iron pin there in 1965.

On April 19, 1989, The Murray County Highway Department dug for the monument and found nothing, they placed a $\frac{3}{4}$ " rebar and tied it out.

On April 17, 2008, Bueltel-Moseng Land Surveying found a spike at the road surface. We were able to check to the Murray County Highway Department ties from April 20, 1989. We replaced the spike with a $\frac{5}{8}$ " iron with seal #43844.